

Speed Study at Vail Valley Dr at Mill Creek Cir – Southbound

VPD Radar Trailer was used to determine traffic counts and vehicle travel speeds over a 15-day period.

This study focused on potential speeding issues.

Results at a Glance

Time period: 15 days (07/05/24 – 07/19/24)

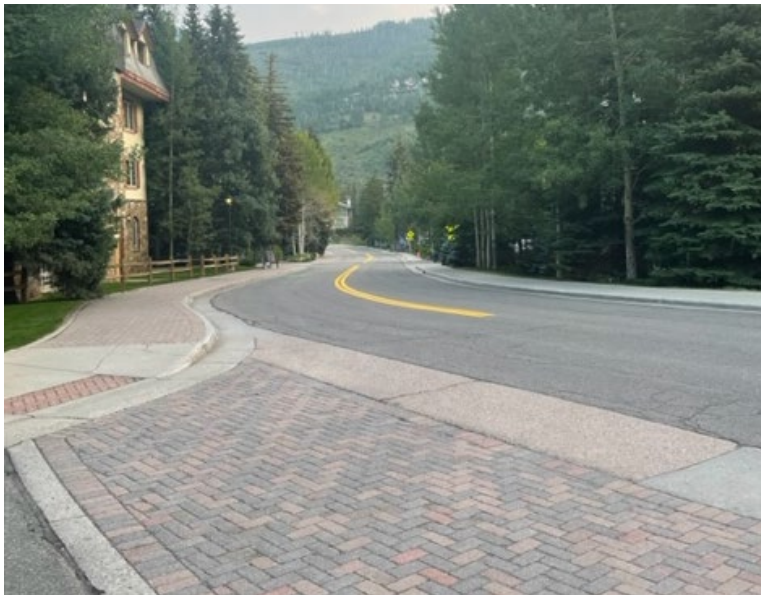
Southbound traffic: 22,296 vehicles

Posted speed limit: 15 MPH

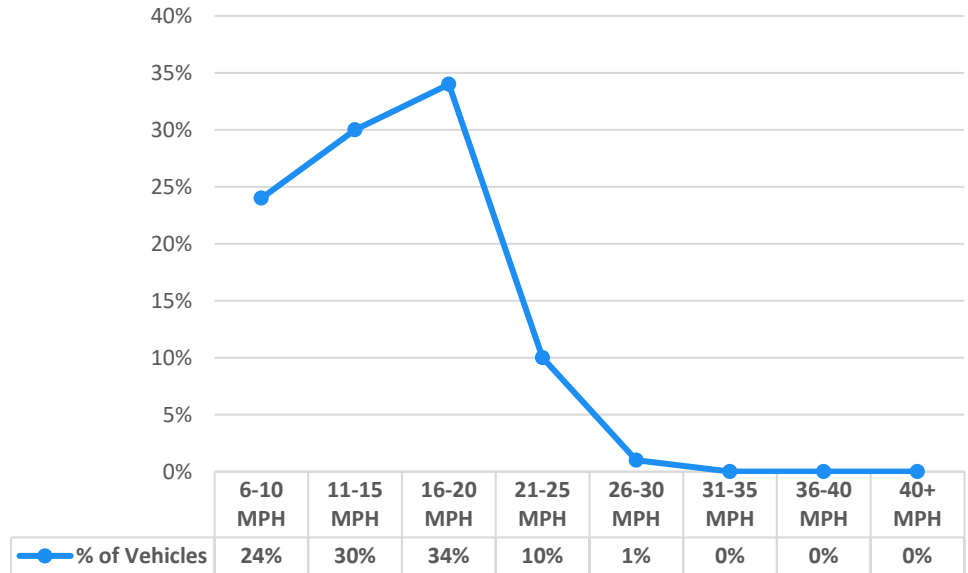
Fastest recorded speed: 93 MPH

Average speed: 15 MPH

Median speed: 15 MPH



Recorded Speeds



Speed Study at 5017 Main Gore Dr - Southbound

VPD Radar Trailer was used to determine traffic counts and vehicle travel speeds over a 24-day period.

This study focused on potential speeding issues.

Results at a Glance

Time period: 24 days (06/06/24 – 06/29/24)

Southbound traffic: 17,312 vehicles

Posted speed limit: 15 MPH

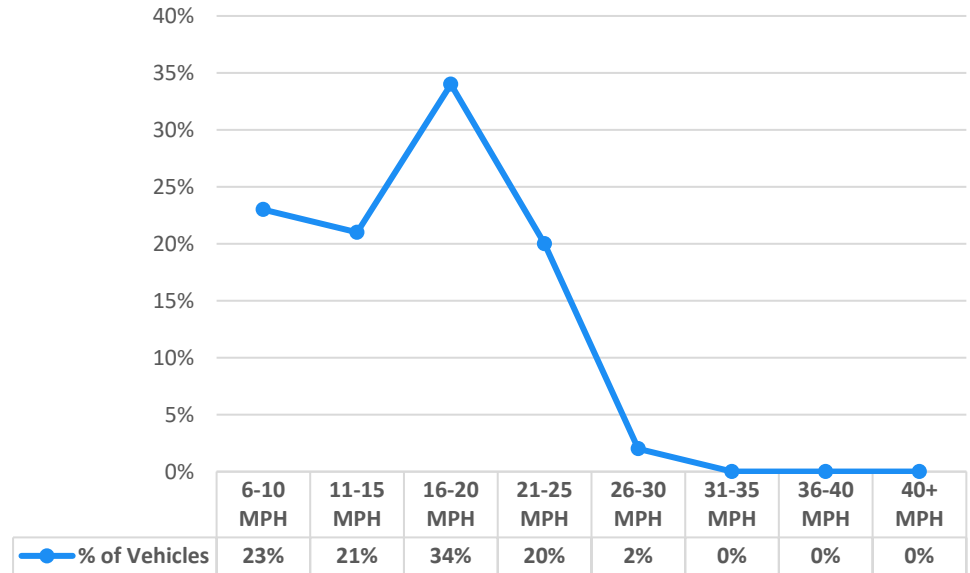
Fastest recorded speed: 44 MPH

Average speed: 16 MPH

Median speed: 17 MPH



Recorded Speeds



Speed Study at 4825 Meadow Dr @Bighorn Park- Eastbound

VPD Radar Trailer was used to determine traffic counts and vehicle travel speeds over a 7-day period.

This study focused on potential speeding issues.

Results at a Glance

Time period: 7 days (06/29/24 – 07/05/24)

Eastbound traffic: 3,584 vehicles

Posted speed limit: 15 MPH

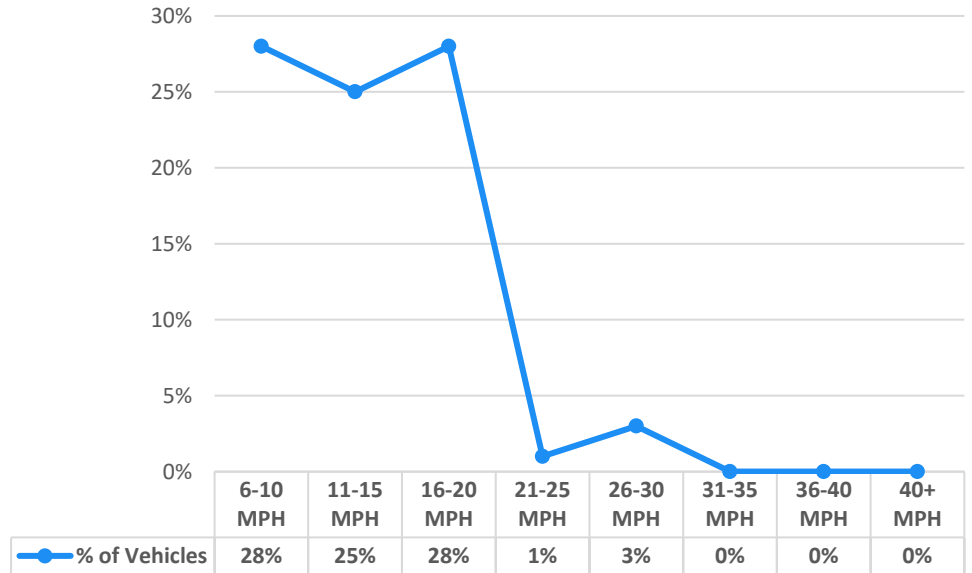
Fastest recorded speed: 35 MPH

Average speed: 15 MPH

Median speed: 15 MPH



Recorded Speeds



Speed Study at 770 Potato Patch - Eastbound Uphill

VPD Radar Trailer was used to determine traffic counts and vehicle travel speeds over a 15-day period.

This study focused on potential speeding issues.

Results at a Glance

Time period: 15 days (10/07/23 – 10/21/23)

Eastbound traffic: 2,274 vehicles

Posted speed limit: 25 MPH

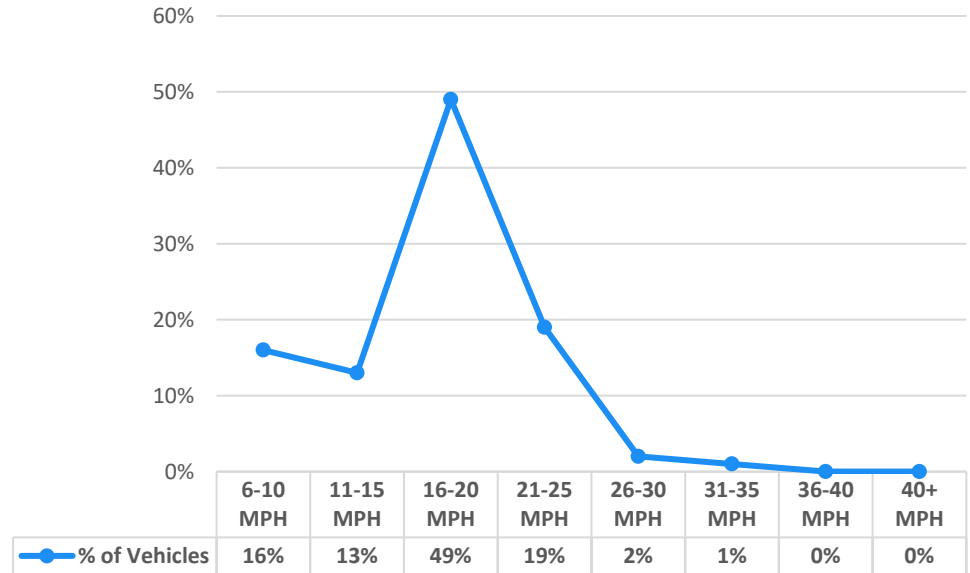
Fastest recorded speed: 45 MPH

Average speed: 17 MPH

Median speed: 18 MPH



Recorded Speeds



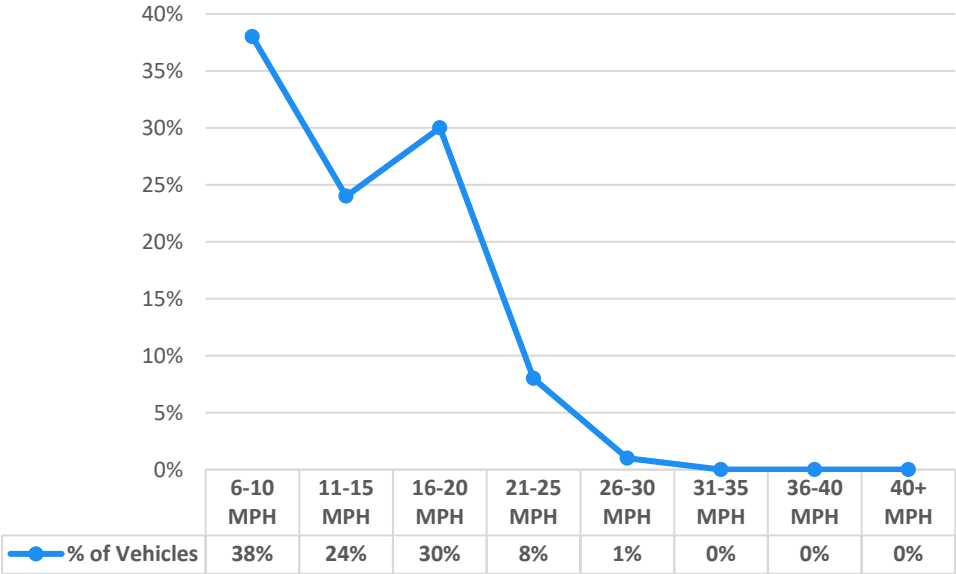
Speed Study at 5017 Main Gore Dr - Northbound

VPD Radar Trailer was used to determine traffic counts and vehicle travel speeds over a 15-day period. This study focused on potential speeding issues.

Results at a Glance	
Time period:	15 days (09/23/23 – 10/07/23)
Northbound traffic:	6,851 vehicles
Posted speed limit:	15 MPH
Fastest recorded speed:	32 MPH
Average speed:	13 MPH
Median speed:	13 MPH



Recorded Speeds



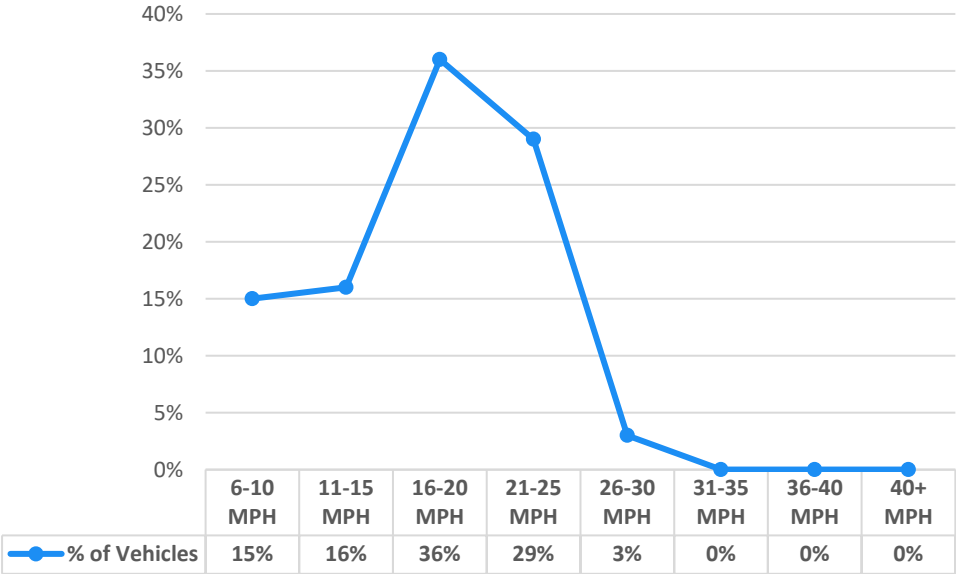
Speed Study at 5017 Main Gore Dr - Southbound

VPD Radar Trailer was used to determine traffic counts and vehicle travel speeds over a 15-day period. This study focused on potential speeding issues.

Results at a Glance	
Time period:	15 days (09/09/23 – 09/23/23)
Southbound traffic:	8,440 vehicles
Posted speed limit:	15 MPH
Fastest recorded speed:	32 MPH
Average speed:	17 MPH
Median speed:	19 MPH



Recorded Speeds



Speed Study at E Meadow Dr @Bighorn Park - Westbound

VPD Radar Trailer was used to determine traffic counts and vehicle travel speeds over a 25-day period.

This study focused on potential speeding issues.

Results at a Glance

Time period: 25 days (08/16/23 – 09/09/23)

Westbound traffic: 11,365 vehicles

Posted speed limit: 15 MPH

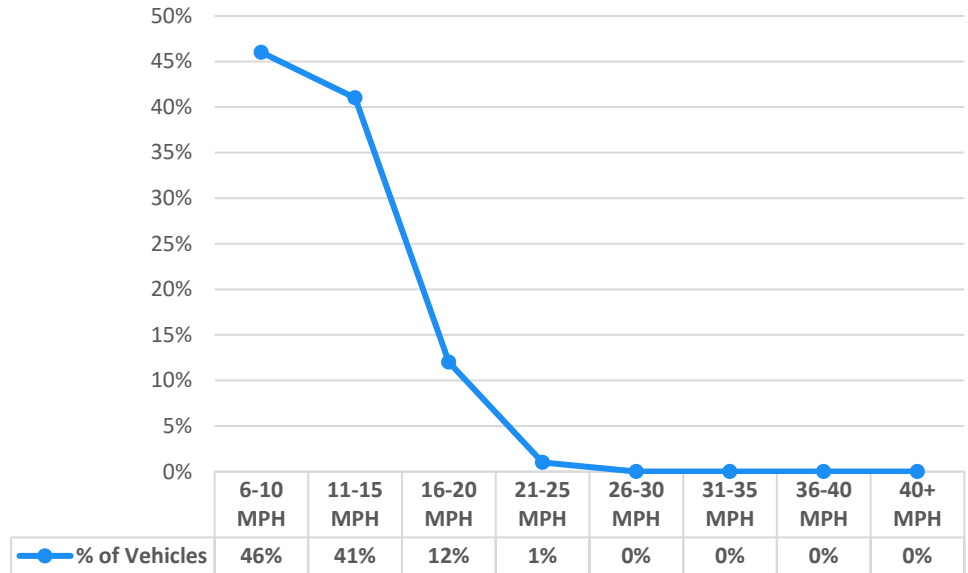
Fastest recorded speed: 29 MPH

Average speed: 11 MPH

Median speed: 11 MPH



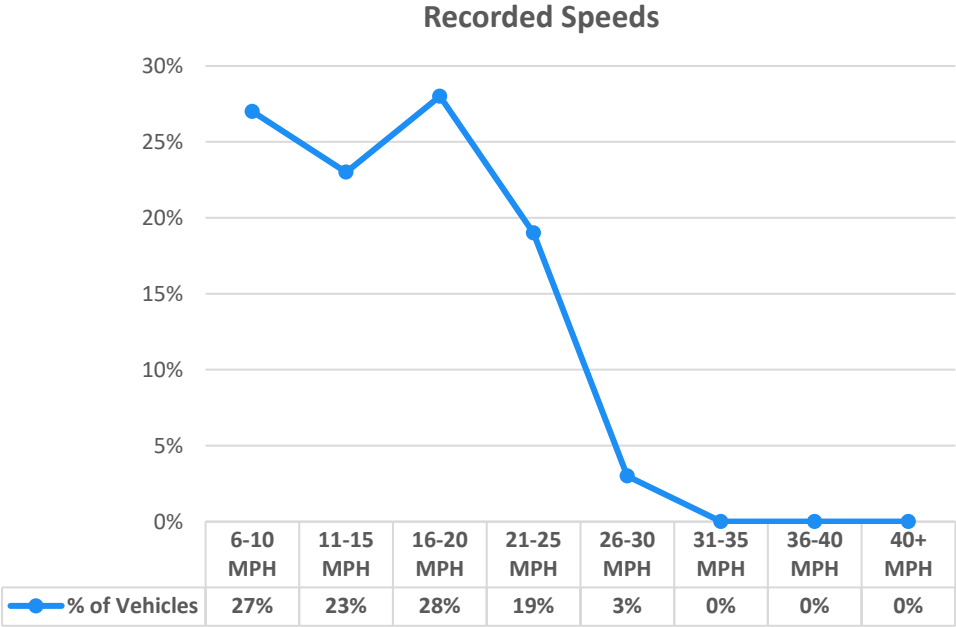
Recorded Speeds



Speed Study at E Meadow Dr @Bighorn Park - Eastbound

VPD Radar Trailer was used to determine traffic counts and vehicle travel speeds over a 20-day period. This study focused on potential speeding issues.

Results at a Glance	
Time period:	20 days (07/28/23 – 08/16/23)
Eastbound traffic:	7,839 vehicles
Posted speed limit:	15 MPH
Fastest recorded speed:	40 MPH
Average speed:	15 MPH
Median speed:	15 MPH



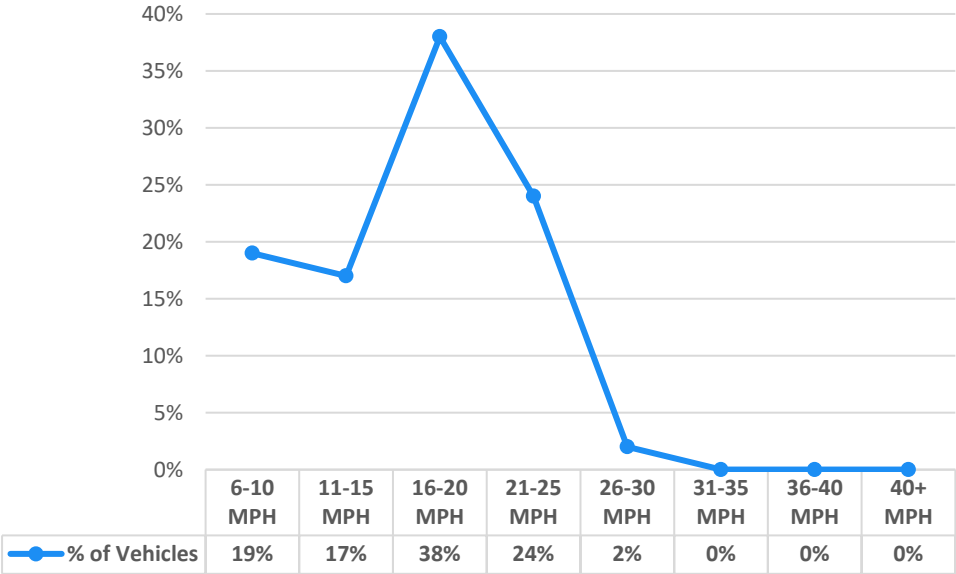
Speed Study at 2379 Chamonix Ln - Westbound

VPD Radar Trailer was used to determine traffic counts and vehicle travel speeds over a 17-day period. This study focused on potential speeding issues.

Results at a Glance
Time period: 17 days (07/12/23 – 07/28/23)
Westbound traffic: 13,496 vehicles
Posted speed limit: 15 MPH
Fastest recorded speed: 45 MPH
Average speed: 17 MPH
Median speed: 18 MPH



Recorded Speeds



Speed Study at 2379 Chamonix Ln - Eastbound

VPD Radar Trailer was used to determine traffic counts and vehicle travel speeds over a 17-day period.

This study focused on potential speeding issues.

Results at a Glance

Time period: 17 days (06/26/23 – 07/12/23)

Eastbound traffic: 11,068 vehicles

Posted speed limit: 15 MPH

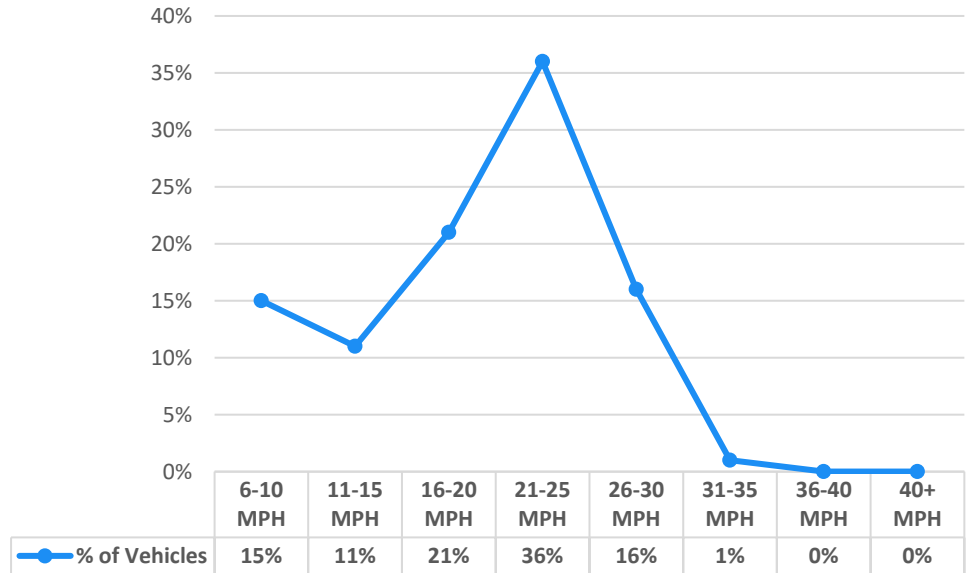
Fastest recorded speed: 47 MPH

Average speed: 20 MPH

Median speed: 21 MPH



Recorded Speeds



Speed Study at Kinnickinnick Rd and Bellflower Dr - Westbound

VPD Radar Trailer was used to determine traffic counts and vehicle travel speeds over a 20-day period. This study focused on potential speeding issues.

Results at a Glance	
Time period:	20 days (04/19/23 – 05/8/23)
Westbound traffic:	5,243 vehicles
Posted speed limit:	25 MPH
Fastest recorded speed:	40 MPH
Average speed:	10 MPH
Median speed:	8 MPH



Recorded Speeds

