

TOV EMERGENCY OPERATIONS PLAN

Updated May 2025

ANNEX G: EMERGENCY EVACUATION PLAN

Introduction:

The Vail Emergency Evacuation Plan (EVPLAN) serves as a guide for Town of Vail emergency responders on how evacuations are initiated, organized and implemented.

A separate outreach plan should be developed and implemented to educate the citizens, merchants and guests of Vail on how to respond to an emergency requiring a partial or full evacuation of the town and on the steps for the safe and orderly return to homes and lodging.

Future planning and development within the Town of Vail should analyze impacts on evacuation. Considerations include roundabouts, traffic calming measures, reductions in roadway width and new development which limits the ability of occupants to have a vehicle on-site and self-evacuate by vehicle.

Community Outreach:

Information in this plan will be presented at community events throughout the year. The Community Information Office will also provide the information through local media and post public-centric information to the Town of Vail website (www.vail.gov/evac). Key to the plan is the community's regular review of how to obtain information and their understanding of critical steps to the evacuation process in the face of a real emergency and ensuring that the community is prepared before an incident occurs. Resources such as www.ready.gov and TOV developed publications on structure hardening and defensible space should be referenced in outreach messaging.

Notification:

When implementing the EVPLAN, the Vail Public Safety Communications Center will utilize emergency phone notifications, also known as Reverse 911, the Emergency Alert System via AM/FM radio stations, EC Alert and the Integrated Public Alert Warning System (IPAWS). Evacuation information will also be available at ecemergency.org and protect.genasys.com. Messages will contain real event information and emergency evacuation instructions. If time and personnel allow, first responders will drive through neighborhoods and make public notifications on emergency vehicle loudspeakers or go door-to-door. **In most circumstances law enforcement will focus their efforts on maintaining the flow of evacuation traffic.**

Evacuation Information:

The primary source for evacuation updates will be the Eagle County Emergency Management website ecemergency.org; when possible, the Town of Vail website will be updated with evacuation information.

Evacuation Procedures:Concepts of Operations:

- A primary consideration in any evacuation scenario is the time available to safely evacuate the population at risk. No-notice or short notice evacuations are fundamentally different than evacuations in which there is adequate advance notice of a risk.
- Door-to-door evacuation is often not possible due to limited staffing, the use of law enforcement personnel will be directed at maintaining the flow of traffic.
- The Vail community has large populations who may not be able to self-evacuate using a personal vehicle. The use of mass transit is critical to safe evacuation.
- Large public events create unique evacuation scenarios.
- During no-notice or events in which there is inadequate time to evacuate to a safe location, the use of Temporary Fire Refuge Areas may be necessary.

Traffic Management: Law enforcement will focus efforts on traffic management and the prevention of traffic jams. Due to the dynamic nature of emergency events no specific traffic control points are pre-designated. Law will focus on real time monitoring of traffic flow and will direct resources to address identified problem areas and choke points. Tow services and/or TOV heavy equipment (front end loader(s)) will be staged and available to move vehicles blocking traffic.

Special areas of concern:

Vail Golf Course area: All residents east of the soccer fields will be directed to evacuate to the East towards Sunburst drive. Vail Valley drive will be signed from the soccer fields east as an emergency evacuation route (one-way to the east).

East Vail Alternate Driving Evacuation Route: In the event the eastern portion of East Vail is blocked during a wildfire incident and residents are unable to exit, an alternative route from the far eastern end of Bighorn Road is to be used. At the spot where the gate marks the end of the road and where the Vail Pass bike path begins, evacuees should turn to the right onto

the dirt road, which leads on to the lower I-70 runaway truck ramp and then onto I-70. Generally, any traffic would then be directed east bound on I-70, as it is a high likelihood the west bound I-70 would be closed at Copper Mountain. If I-70 was not closed west bound, then traffic would be routed west. See attached maps for details.

Alternate I-70 Access: alternate access to I-70 using pre-designated “slip ramps” may be implemented to expedite traffic clearance.

Evacuation Instructions:

Self-Evacuation by Vehicle

1. Exit the area/neighborhood in the safest direction (moving away from hazard)
2. Drive to I-70 and proceed as directed. Typically, the public will be directed to the West for incidents occurring to the East and East for incidents occurring to the West.

Evacuation by Public Transportation (assume 8 buses staffed, 75 occupants per bus) Note: Transit will be responsible to coordinate with other transportation such as CORE, school district etc.)

1. Public will be directed to a designated emergency evacuation bus stop
2. TOV Transit Evacuation:
 - a. Persons evacuated by bus will be relocated to a TFRA
OR
 - b. Evacuees will be transported to an evacuation check-in center (West/East)
 - i. Buses leaving the town limits during an evacuation will be difficult to return to area due to expected traffic outside the evacuation area. This should be accounted for in managing where buses transport community members.

Evacuation of hotel occupants who do not have a vehicle will be evacuated through a coordinated effort between Vail Transit and hotel shuttles. Hotel occupants may be directed to shelter in place. Many hotel staff may not have a vehicle on site.

Evacuation Bus Stops: Evacuation bus stops will be pre-designated and signed as emergency evacuation bus stops

Pick-up Locations:

East Vail Route

- Intersection Main Gore and Bighorn Road

- Falls at Vail (North side MM 180 interchange)
- Booth Falls

Village Core / S. Frontage

- Gold Peak
- Vail TRC
- Lionshead TRC
- West Lionshead Circle
- Cascade Village
- Donovan

West Vail

- Middle Creek
- Red Sandstone School
- Timber Ridge
- West Vail Mall

Shelter in Place

During certain incidents, such as a hazardous materials spill, or communicable disease outbreak, the public may be asked to remain indoors and not evacuate. In these cases, citizens should be prepared to stay in their homes for a minimum of 72 hours and have enough supplies on hand to support the number of residents living there.

Temporary Fire Refuge Area

In the event of wildfire where residents are unable to evacuate, they should go to a preplanned **Temporary Fire Refuge Area** such as a large field that is clear of brush and far away from trees or inside designated fire hardened structure. Pre-designated TFRAs:

- a. Intersection Bighorn Rd. and Main Gore Dr. N.
- b. Vail Mountain School Fields
- c. Ford Park fields
- d. Vail Village parking structure
- e. Gondola 1 ski yard
- f. Lionshead parking structure
- g. Lionshead gondola ski yard
- h. Red Sandstone School
- i. Red Sandstone parking structure

**Portable (a-frame) TFRA signs will be staged at the Lionshead and Vail Village parking structures.

Evacuation Check-In Locations (one or more may be designated):

- West Evacuation: Eagle River Center 971 Fairgrounds Rd. Eagle, CO

- East Evacuation: Summit County -Silverthorne Recreation Center 430 Rainbow Road, Silverthorne, CO

Evacuation Center Check-in:

Check-in operations will be conducted by Eagle County Emergency Management and may include the Red Cross or Salvation Army. The required check-in information will consist of the evacuee's name, birth date, home address, cell phone numbers, the location of the temporary shelter in which the person will be placed, and when applicable, the date and time a person was released to take care of their own shelter needs. EC Emergency Management will be responsible for reunification.

Functional and Access (Special) Needs Population:

These are citizens and guests that will require assistance leaving their residence or, in the case of a power outage, those who have medical needs requiring electricity. Those who are unable to self-evacuate should call 911. VPSCC will notify the UC of the location and need. The LE branch will coordinate use of transit ADA vehicles, ECPS or other resource to evacuate the functional needs persons.

Pets: Domestic pets may accompany evacuees as long as they are on a leash or contained so as not to injure other evacuees or their pets. Pets may not be allowed at public shelters; Eagle County Emergency Management will coordinate with the Eagle County Animal Control to house pets of individuals housed in shelters.

Facilities Requiring Special Attention During Evacuation

Vail Mountain:

Vail Resort Security is responsible for organizing shelter on the mountain, rerouting people across the mountain and conveying guests into town.

Vail Village/Lionshead Village:

Attendees of outdoor events should prepare to evacuate using their personal vehicle. Vehicular traffic may be held inside the parking garages until it is safe to evacuate and to prevent traffic congestion.

Vail Health:

Due to the resources and coordination required to evacuate the hospital, all efforts will be made to defend and protect it from whatever the nature of the incident. If the hospital is evacuated, the Vail Health plan will be put into action.

Red Sandstone Elementary School

Evacuation group will coordinate efforts with Eagle County School district for evacuation and reunification.

Vail Mountain School

Evacuation Group will coordinate efforts with VMS for evacuation and reunification.

Children's Garden of Learning

Evacuation Group will coordinate efforts with CGL for evacuation and reunification.

Vail Child Care Center

Evacuation Group will coordinate efforts with Vail Child Care Center for evacuation and notification.

Evacuation Incident Command Structure:

Evacuations will be organized through the Incident Command System.

Departments and partner agency involvement:

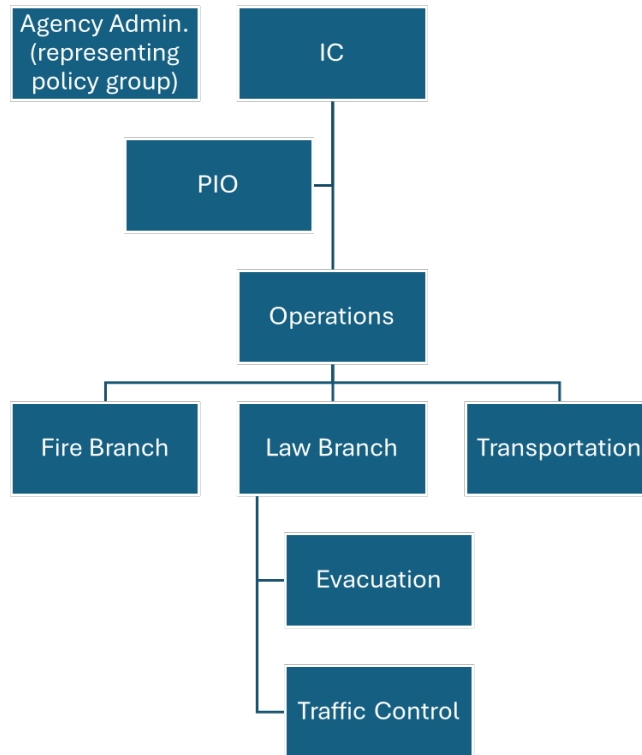
Primary Evacuation Responsibility

- Police Department
 - Facilitates evacuation-primarily through traffic control, coordinates deployment of alternate vehicles for functional needs populations
- Transportation Department
 - Provides transportation from Emergency Evacuation bus stops/ deploys other vehicles for functional needs
- Community Information Office
 - Disseminates information

Secondary Evacuation Responsibility

- Fire Department
 - Fire suppression, Haz-mat mitigation, rescue
- Public Works Department
 - Assists with traffic control, deploys heavy equipment to move abandon vehicles blocking traffic
- Eagle County Paramedic Service
 - Assist with functional needs transport
- Colorado State Patrol
 - Assigned to LE branch functions
- Eagle County Emergency Management
 - Staffing Evacuation Center Check-In Locations
 - Reunification for families separated during an evacuation
 - Shelter Operations
 - Coordinates sheltering operations through EOC

Initial Incident Command Structure



East Vail Emergency Evacuation Alternate Route Map

